

# 4 EXAMPLES

## OF ROOM LAYOUT ACCORDING TO THE WISHES OF THE TENANT

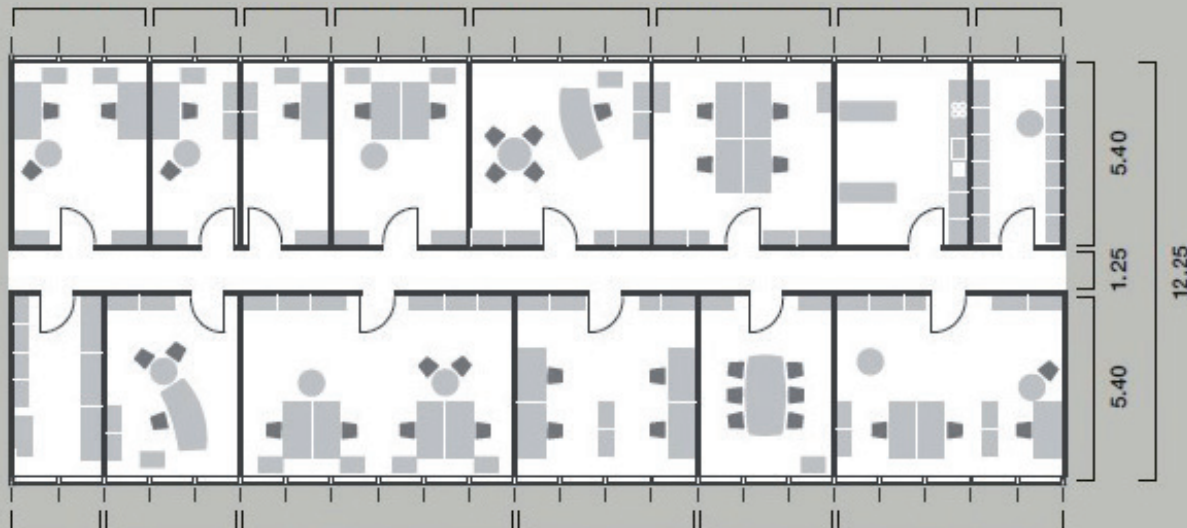
The trend towards individualisation has firmly established itself in the room design of office spaces. In order to pay tribute to the most diverse demands made on stimulating and efficient working environments and to consider all aspects in question, the vast majority of office spaces is individually offered to the tenants.

Room types and concepts are combined in different ways to fulfil the demands made by the working processes of the users. The following sections are an excerpt of available options.

# A

## CELL STRUCTURE

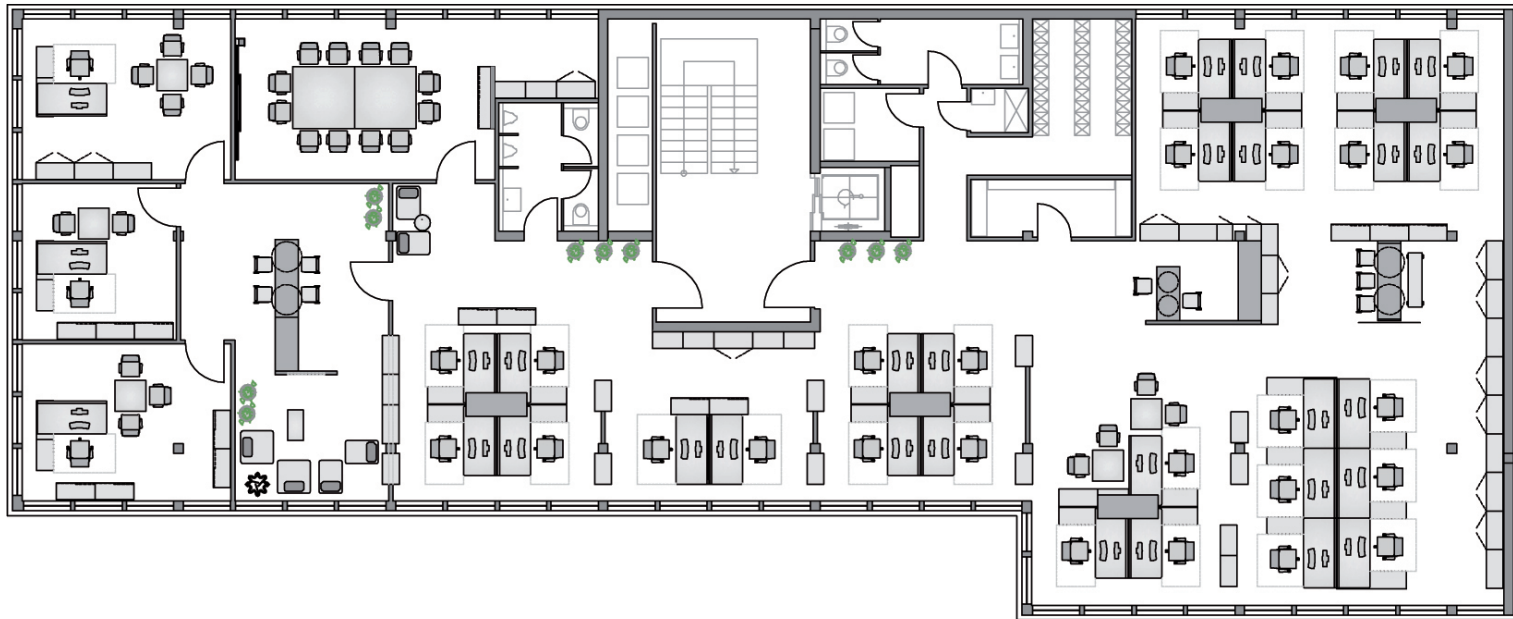
Offices with the classic cell structure usually have 2 - 3 window axes (1.25 to 1.35 m per window axis) and are primarily used in sections where single persons have to work in a highly concentrated manner and where confidential talks are made.



# B

## GROUP AND TEAM OFFICES

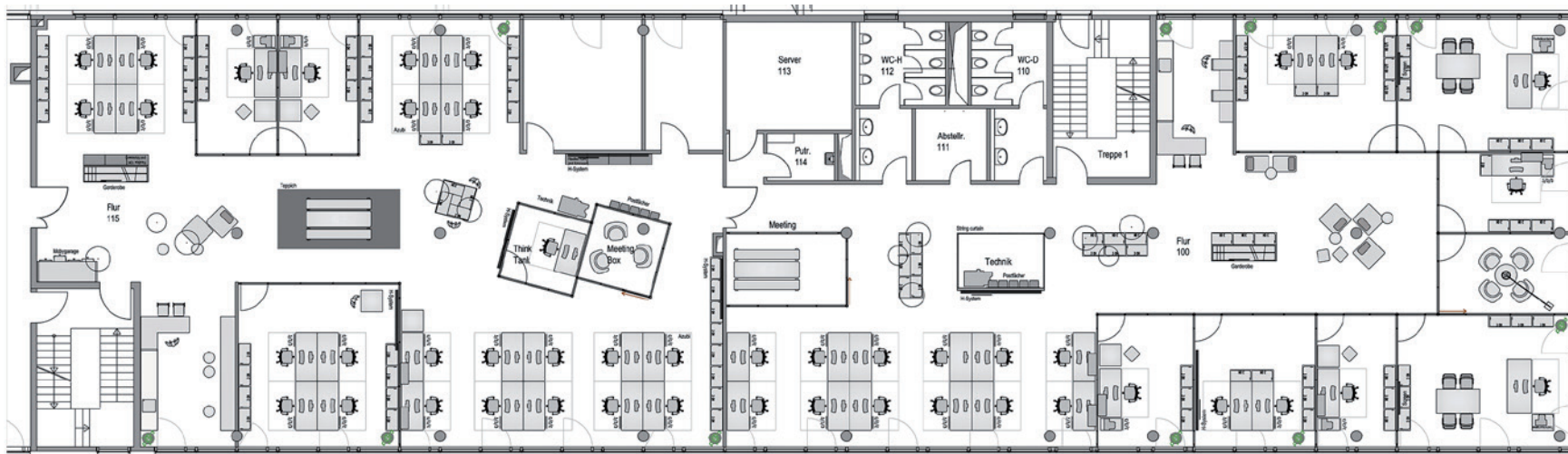
Group offices and open space sections are usually designed in scenarios where people are cooperating in project teams. This makes it possible to exchange information quickly and efficiently and to come up with solutions in the same way.



C

## COMBINED OFFICES

This concept combines the cell structure with communication, copy and storage zones. This is achieved by means of designing a more reduced room depth compared with cell offices. The space acquired in this way in the intermediate zone is used for communication areas (lounges and sections for spontaneous or informal meetings, sitting/standing solutions for team conferences, copy and binding spaces, storage spaces).

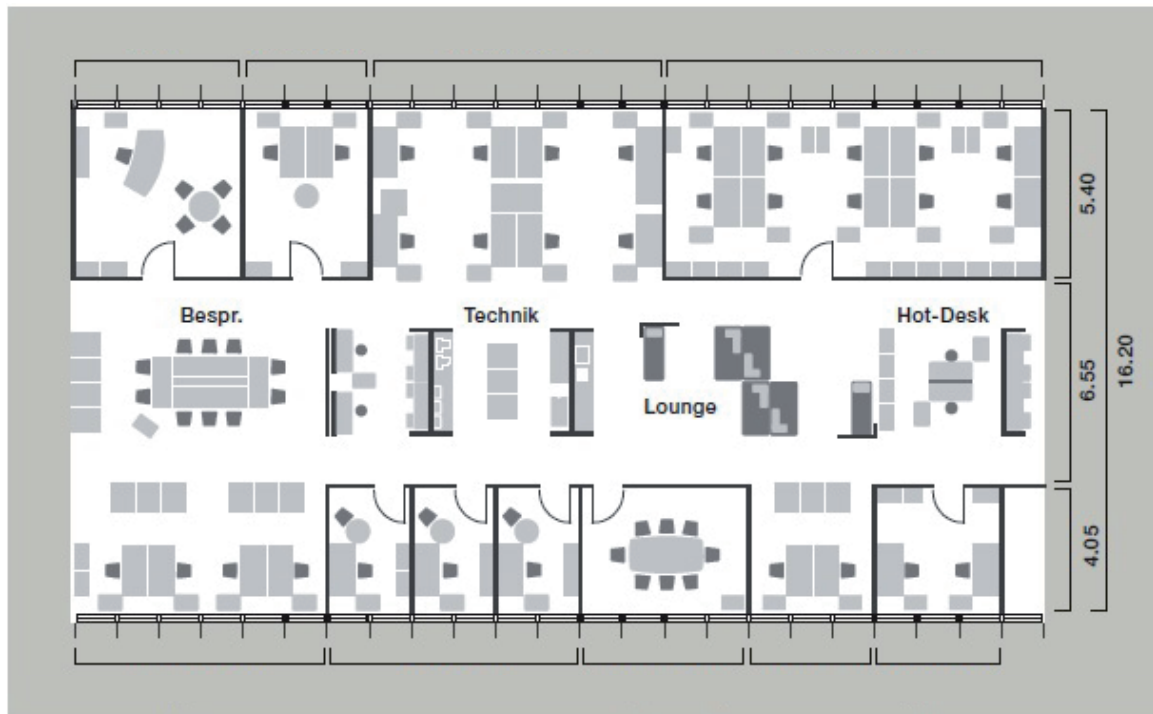


# D

## DESK-SHARING

### NON-TERRITORIAL OFFICE

In the case of desk-sharing or non-territorial offices, the workplaces are not assigned to specific desks. This is particularly interesting for working environments which require comprehensive travel activities or where several employees are primarily working on customer premises.





In the context of our consulting processes, we support you in the cooperation with technical planners, architects, and interior designers. Together we will develop your most economically-efficient room programme which is individually designed to your working processes. Please contact us for further information.

All floor plans are provided by Steelcase.



We won't look,  
we'll find!

Bürokompass GmbH  
Grete-Mosheim-Str. 13  
80636 München  
Tel.: +49 (0)89 51777070  
Fax: +49 (0)89 51777079  
E-Mail: [office@buerokompass.de](mailto:office@buerokompass.de)  
[www.buerokompass.de](http://www.buerokompass.de)

